

# AUTOCLAVE

All autoclave products sold by Savia offer a guarantee of up to 10 years against rotting and attack by fungi and xylophagous insects. During this time, wood that is attacked by destructive fungi or insects will be replaced or paid for under the terms set out in the warranty conditions.

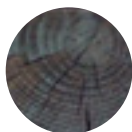
This warranty refers to the cost of the material and in no case will it cover installation costs or other added values.

Wood is a natural, decorative and aesthetic product that is constantly moving, expanding and contracting to seek a balance with the equally changing environmental conditions. This movement, combined with the internal stresses of the wood, can cause warping and bending.

## EXCLUSIONS



**KNOTS:** Knots are part of the wood and help to give a natural look to the product. Each piece is unique in terms of the quantity, size and position of the knots. They affect neither the strength nor the durability of the product.



**CRACKS:** These are generally produced as a consequence of the contraction and expansion processes that the wood undergoes with changes in temperature and humidity. It is more likely for them to occur in larger sections as the wood suffers more during the drying process.



**DISCOLOURATION:** This is degradation caused by abiotic agents, especially UV rays, which causes discolouration of the pigments, giving a greyish appearance to both autoclave-treated and non-autoclave-treated products. This effect can be slowed down by applying a lasur that protects the material from atmospheric agents.



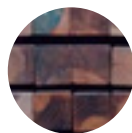
**SURFACE MOULD:** Surface mould may appear on treated material especially when stored in dark, cold and damp environments.

The autoclave treatment protects the wood against rot and fungi internally and this defect does not affect the durability of the wood. Surface fungi can be removed by gently brushing.



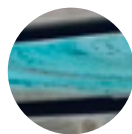
**RESIN EXUDATION:** Resin is one of the components that emerges from inside the wood when it is subjected to high temperatures. The wood expels a large proportion of its resin content during the drying process. This does not mean that it is completely free of resin, so it can therefore resurface when it is exposed to high temperatures again.

The resin will mainly be secreted in the area of the knots and can be easily removed with a spatula or by gently sanding the material without damaging it. You could also use products such as turpentine oil for cleaning.



**DIFFERENCE IN SHADE:** As a natural product, untreated wood has different shades, depending on the area of the trunk from where the board is extracted (sapwood, heartwood) and the intrinsic characteristics of the tree itself (age, time of cutting, place of plantation, etc.). As a consequence, these differences in shades are also transferred to the products that are treated.

The differences in tone contribute to the charm of installations made of wood and will harmonise with the passage of time.



**SALT EXUDATION:** Copper salts are introduced into the wood cells during the autoclave process, and they may be exuded naturally in different quantities depending on the area of the trunk and the properties of the particular tree.

The salt crystals can be removed by light sanding and the quality of the treatment is not affected by this.

## CONDITIONS

- Savia undertakes to refund or replace material for any claims where all the terms set out in the rest of the warranty conditions are fulfilled. For replacements, the material will be substituted with another material of the same type. If the product is discontinued or not available, it will be replaced with a product of similar properties and equal value to the one in the claim.
- For us to process any claim you will need to provide an invoice or proof of purchase for the material in the claim.
- This warranty shall only apply to those defects in the product that originate as a result of the production process; i.e. defects caused during or because of incorrect transport, handling, pre-packaging or installation of the product are not covered by this warranty.
- Before installation, check the material to ensure that it has not been damaged in transit and that there are no surface defects. No claims will be accepted for installations with defective material.
- All the steps indicated in the installation recommendations must be followed as well as the maintenance treatments. Failure to follow the installation recommendations will invalidate the product warranty.
- The product is subject to variable annual depreciation according to the table below:
- The manufacturer reserves the right to inspect the product and/or the installation that is the subject of the claim and, in any case, to collect samples, gather or request all the information regarding the product, installation, maintenance and use of the product that is necessary to properly evaluate the claim
- This warranty does not cover any costs over the purchase value of the product. For example, no claims will be accepted for installation, replacement costs, dismantling, additional materials or penalties (e.g. for delays in the completion of works, etc.)
- The manufacturer shall not be liable to the customer or any third party for any incidental, special or consequential damages arising from any breach of this warranty.
- To make this warranty effective, you must contact the supplier within 14 days of becoming aware of the defect, and in any case before the end of the warranty period. This warranty is of a personal nature and in no case shall it be transferred.
- The warranty does not cover installations when:
  - They do not respect the usage class stated in the treatment part of the technical data sheet.
  - The wood has been removed and reinstalled in a location other than the original location.
  - The wood is cut, drilled or notched after treatment and its exposed faces are not protected with a wood preservative to protect the integrity of the treatment.
- The material will be guaranteed for the remaining time until the end of the warranty period granted to the original material that is the subject of the claim.

01-02 years	03-04 years	05-07 years	08-10 years
100%	75%	50%	25%