

THERMAL MODIFICATION

Thermally modified pine wood (*Pinus pinaster*) has the suitable strength and properties to be used for external building components.

It is a durable and ecological wood with a varied appearance characterised by knots in the surface, offering a high-quality and naturally durable alternative for flooring and interior and exterior cladding.

Thermally modified decking is a flooring obtained through a technologically advanced process, using heat and steam cycles reaching temperatures of 180°C to 220°C, modifying the molecular structure of the wood to confer greater natural durability and dimensional stability.

The heat treatment gives the wood a warm and dark shade.

APPLICATION LOCATIONS	For outdoor use (without direct contact with water and soil) and indoor use on level or regularised floors.
APPLICATION TYPES	Product recommended for decorative purposes, not structural applications.

MAINTENANCE AND CLEANING

- Maintenance of the material is very important to increase its durability.
- An oil suitable for this type of material should be applied.
- In the case of concealed fixing, it is advisable to assess the need to re-tighten the fixing screws after installation. This task must be repeated at most every 2 years.
- Protect the material for when you need to move any loads on it.
- Use products that are safe and suitable for wooden floors. Do not use sharp or abrasive material, wax or electric waxers, steel brushes, sandpaper or silicone products.
- The floor should preferably be cleaned using high-pressure washers or, more simply, scrubbed with water.

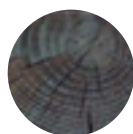
STORAGE

- When transporting or storing, keep the material in a dry place protected from direct sunlight.
- The sides and edges of the material must be protected until the material is eventually used.
- The material must be placed on a flat, stable surface that is not in contact with moisture.
- Before installation, the material should be placed in the room where it will be used 8 days in advance so the wood can acclimatise. Store the product stacked. Do not install it during the rainy season.

EXCLUSIONS

Each piece of wood has a distinct and characteristic pattern that enhances its natural beauty. The markings on the wood may vary from the samples shown and their shade may vary over time. Variations in the characteristics and colour of the wood cannot be considered a defect, they

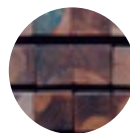
are unique characteristics of a natural and biological product. The original colour of the wood undergoes variations when exposed to light and after a certain period of time.



CRACKS: These are generally produced as a consequence of the contraction and expansion processes that the wood undergoes with changes in temperature and humidity. It is more likely for them to occur in larger sections as the wood suffers more during the drying process.



DISCOLOURATION: This is degradation caused by abiotic agents, especially UV rays, which causes discoloration of the pigments, giving a greyish appearance to both autoclave-treated and non-autoclave-treated products. This effect can be slowed down by applying a lasur that protects the material from atmospheric agents.



DIFFERENCE IN SHADE: As a natural product, untreated wood has different shades, depending on the area of the trunk from where the board is extracted (sapwood, heartwood) and the intrinsic characteristics of the tree itself (age, time of cutting, place of plantation, etc.). As a consequence, these differences in shades are also transferred to the products that are treated.

The differences in tone contribute to the charm of installations made of wood and will harmonise with the passage of time.



SURFACE MOULD: Surface mould may appear on treated material especially when stored in dark, cold and damp environments.

The treatment protects the wood against rot and fungi internally and this defect does not affect the durability of the wood. Surface fungi can be removed by gently brushing.



KNOTS: Knots are part of the wood and help to give a natural look to the product. Each piece is unique in terms of the quantity, size and position of the knots. They affect neither the strength nor the durability of the product.

1. Savia undertakes to refund or replace material for any claims where all the terms set out in the rest of the warranty conditions are fulfilled. For replacements, the material will be substituted with another material of the same type. If the product is discontinued or not available, it will be replaced with a product of similar properties and equal value to the one in the claim.
2. For us to process any claim you will need to provide an invoice or proof of purchase for the material in the claim.
3. This warranty shall only apply to those defects in the product that originate as a result of the production process; i.e. defects caused during or because of incorrect transport, handling, pre-packaging or installation of the product are not covered by this warranty.
4. Before installation, check the material to ensure that it has not been damaged in transit and that there are no surface defects. No claims will be accepted for installations with defective material.
5. All the steps indicated in the installation recommendations must be followed as well as the maintenance treatments. Failure to follow the installation recommendations will invalidate the product warranty.
6. The product is subject to variable annual depreciation according to the table below:
7. The manufacturer reserves the right to inspect the product and/or the installation that is the subject of the claim and, in any case, to collect samples, gather or request all the information regarding the product, installation, maintenance and use of the product that is necessary to properly evaluate the claim
8. This warranty does not cover any costs over the purchase value of the product. For example, no claims will be accepted for installation, replacement costs, dismantling, additional materials or penalties (e.g. for delays in the completion of works, etc.)
9. The manufacturer shall not be liable to the customer or any third party for any incidental, special or consequential damages arising from any breach of this warranty.
10. To make this warranty effective, you must contact the supplier within 14 days of becoming aware of the defect, and in any case before the end of the warranty period. This warranty is of a personal nature and in no case shall it be transferred.
11. The warranty does not cover installations when:
 - a) They do not respect the usage class stated in the treatment part of the technical data sheet.
 - b) The wood has been removed and reinstalled in a location other than the original location.
 - c) The wood is cut, drilled or notched after treatment and its exposed faces are not protected with a wood preservative to protect the integrity of the treatment.
12. The material will be guaranteed for the remaining time until the end of the warranty period granted to the original material that is the subject of the claim.

01-02 years	03-04 years	05-07 years	08-10 years
100%	75%	50%	25%